



**AN INTERNATIONAL
TRADE ADVANTAGE**

Port San Antonio is covered by a general purpose foreign-trade zone designation, FTZ #80-10, providing businesses the ability to activate this option. The foreign-trade zone is administered by Free Trade Alliance San Antonio.

Importers, distributors, manufacturers and others can activate the FTZ option to defer, eliminate or reduce duties on imported goods.

Businesses can also access the benefits of FTZ #80-10 on an as-needed basis through The OpTech Group, a third party logistics provider at the Port. For more information go to www.otcorp.com or call (855) 276-6136.

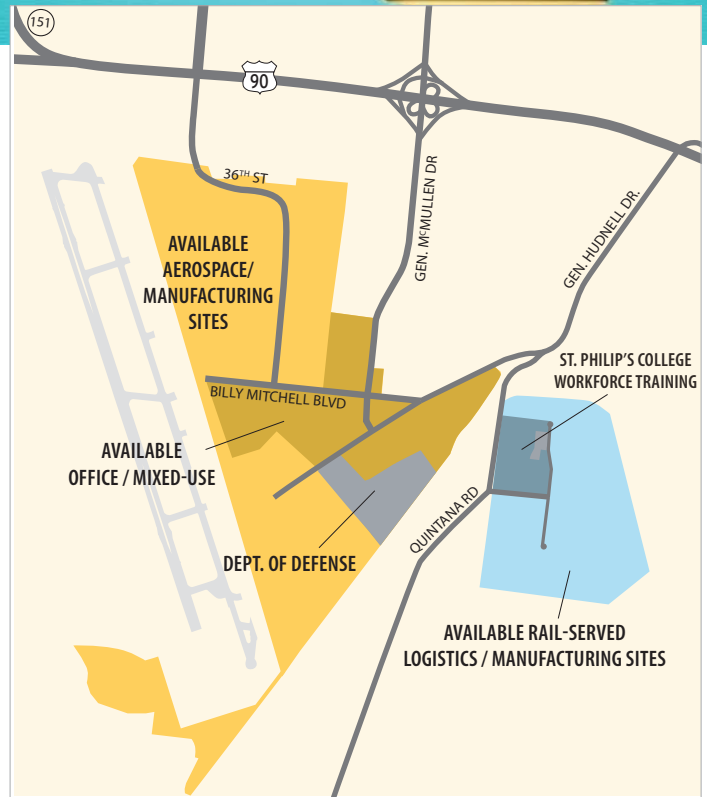


About Port San Antonio

THE PORT IS AN ISO 9001-CERTIFIED ORGANIZATION IN QUALITY MANAGEMENT.

Port San Antonio is redeveloping the former Kelly Air Force Base creating the conditions that maintain and grow quality jobs.

The 1,900-acre site features an industrial airport, railport and mixed-use development. Today the Port is home to over 70 private and public sector organizations which employ approximately 12,000 workers in aerospace, military, logistics, manufacturing and other key industries in the region.



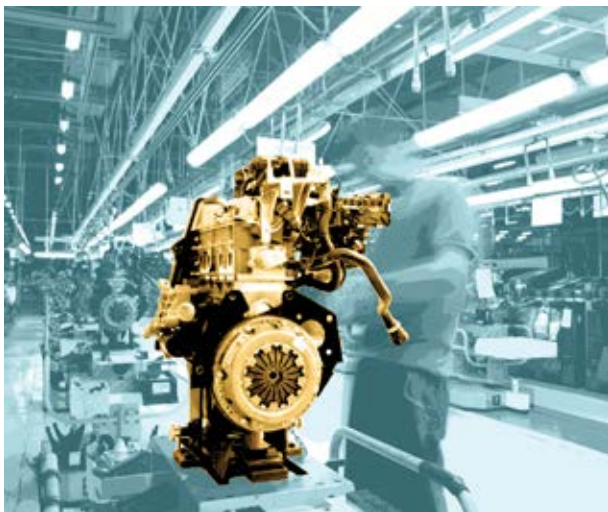
LOGISTICS SUPPORT AND GLOBAL CONNECTIONS

Users of FTZ #80-10 are supported by Port San Antonio's comprehensive logistics platform to reach worldwide markets.



- **Highway Access** – The Port is within minutes of IH 10, which runs from Los Angeles to Miami, and IH 35, connecting the U.S. with Mexico and Canada. Nearby IH 37 extends to the Port of Corpus Christi in the Gulf of Mexico.
- **Industrial Airport** – Port San Antonio's Kelly Field (SKF) runway is among region's largest and able to accommodate any type of cargo aircraft 24/7.
- **Railport** – Port San Antonio's East Kelly Railport provides access Union Pacific and BNSF Railway. Third-party transload and warehousing services are available through RLI Logistics and Fiesta Warehousing & Distribution at East Kelly.
- **U.S. Customs** – An on-site Federal Inspection Services facility at Kelly Field can promptly inspect foreign shipments.
- **Seaports** – Houston and Corpus Christi are within three-hour drives from Port San Antonio. Mexican seaports are also within easy reach, including the Pacific Port of Lázaro Cárdenas.

FTZ ADVANTAGES



- **Duty Deferral** - If goods are imported and warehoused in an FTZ, duty payments are due only once the goods leave the FTZ and enter the U.S. market. Postponing duty payment provides a cash-flow advantage to importers/exporters.
- **Duty Elimination** - Import duties can be avoided altogether if goods that enter the FTZ are stored, sorted, tested, repackaged and otherwise handled within the FTZ and are then exported without ever entering the U.S. marketplace.
- **Duty Reduction** – Import duties on components are often higher than those charged for finished products entering the U.S. market. Because duties are not charged while imported components remain in the FTZ, products can be assembled or manufactured inside the FTZ before leaving the zone as finished goods, which are generally charged a lower duty than components.
- **Waste Duty Elimination** – A portion of imported materials brought into the FTZ for assembly or manufacturing sometimes becomes scrap. Duties are not imposed on waste products.
- **Weekly Entry** – Imported goods that enter through an FTZ can be consolidated into a single weekly charge, rather than by individual shipment.
- **Inventory Tax Elimination** – Goods imported into an FTZ are exempt from local personal property taxes while in the FTZ.



Contact us

www.PortSanAntonio.us/FTZ
(210) 362-7800